

Studio.

SECOND FLOOR AT PEARSE STREET

343 SQ M | 3,689 SQ FT

Workspace

1,400 x 800mm desks **46**

Enclosed meeting

Phone booths **3**

Meeting rooms **1**

Social & open meeting

Tea station **1**

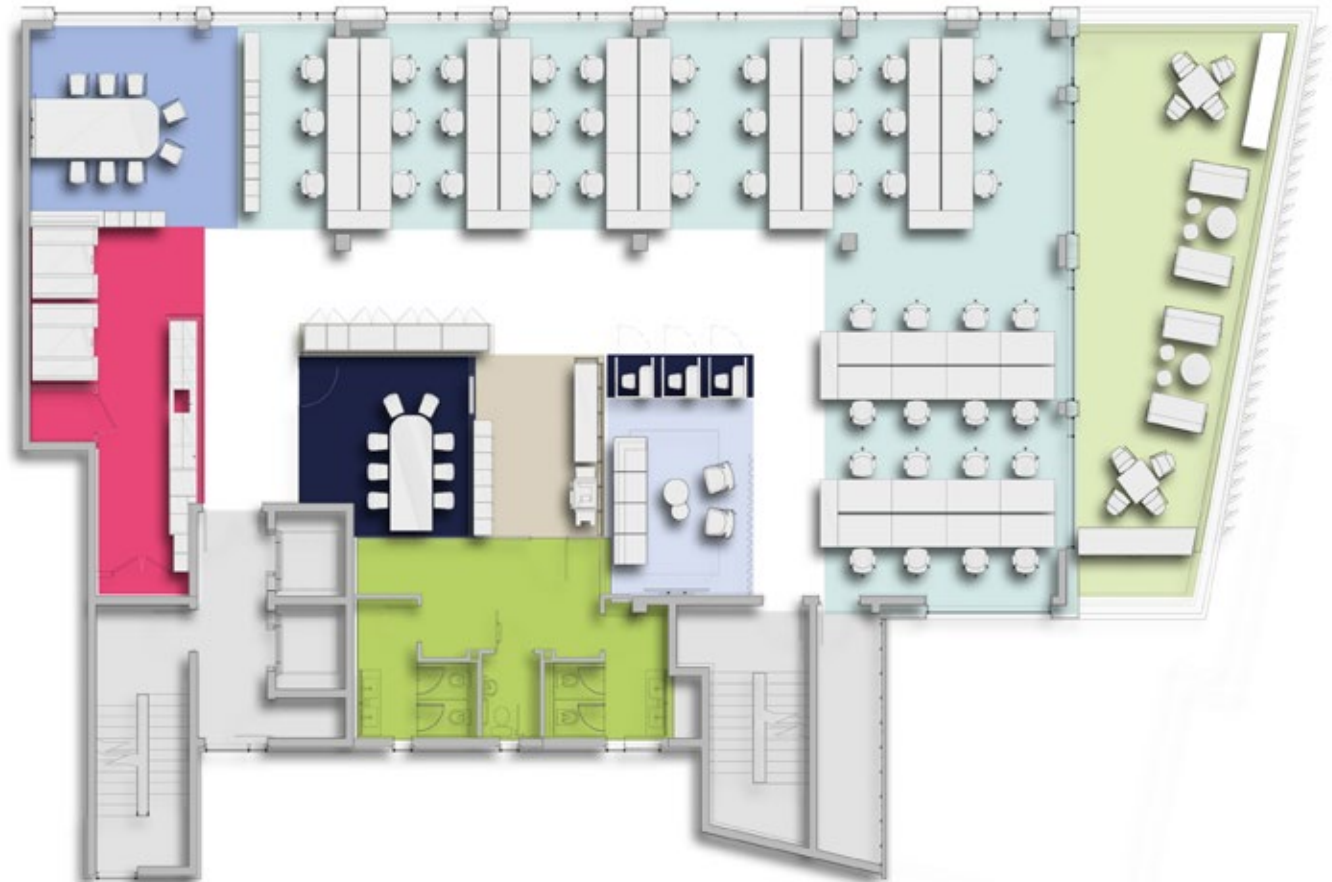
Lounge **1**

Collaboration **1**

Support

Copy/print **1**

Storage/lockers **2**



● Work seats

● Enclosed meeting

● Collaboration

● Lounge

● Tea station

● Toilet amenities

● Outdoor terrace

● Print / locker

studiodublin.com

